

the  
fastest  
gear  
on the  
road





Custom Cycling and Skinsuit Examples





Custom Cycling and Skinsuit Examples

# Custom Cycling Gear



11746 SW 133 Place • Miami, FL 33186 • Toll-Free: (800) 594-3331 • P: (786) 272-2404 • F: (305) 752-4894 • [www.velocespeedwear.com](http://www.velocespeedwear.com) • [info@velocespeedwear.com](mailto:info@velocespeedwear.com)

Outfit your team with professional quality jerseys and shorts. We also offer skinsuits for time trials and speedskating. We use the highest quality dye-sublimation printing for rich color graphics. Give your team the distinctive identity it needs.

## Short-sleeve Jersey

Featuring moisture wicking, high-tech fabrics and highest quality tailoring.

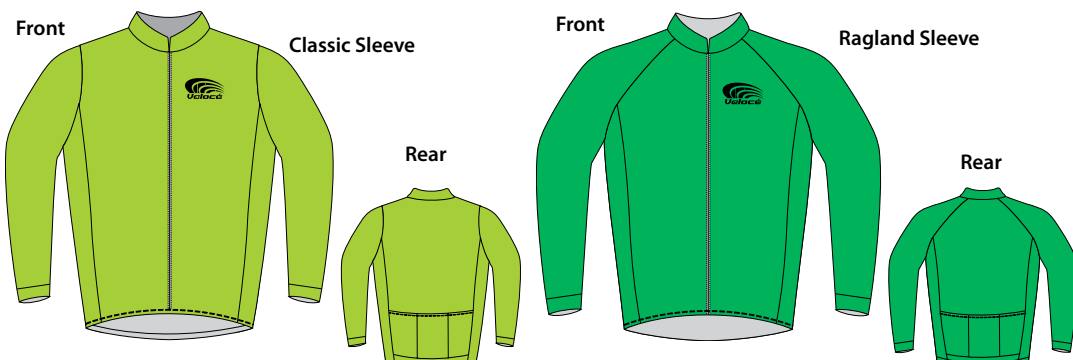
- ◆ Standard full zipper, optional 3/4 invisible, 3/4 standard or short zipper
- ◆ Standard *Termic Pique* fabric, premium fabrics optional
- ◆ Available in women's specific



## Long-sleeve Jersey

Need more protection? Cover up with a long-sleeve jersey.

- ◆ Standard full zipper, optional 3/4 invisible, 3/4 standard or short zipper
- ◆ Standard *Termic Pique* fabric, premium fabrics optional
- ◆ Available in women's specific



## Sleeve-less Jersey

Our sleeve-less jersey lets you keep cool and has all the same features as our regular jerseys.

- ◆ Standard full zipper, optional 3/4 invisible, 3/4 standard or short zipper
- ◆ Standard *Termic Pique* fabric, premium fabrics optional
- ◆ Available in women's specific



## Jacket & Vest

Complete your team's outfitting with our custom jackets and vests. Brave the elements in style!

- ◆ Water-resistant material
- ◆ Also available in fleece for colder weather
- ◆ Unisex cut



## Custom Shorts

The perfect balance of support, comfort and flexibility combine for total performance.

- ◆ Flatlock seams
- ◆ Polyester/Lycra & Nylon/Lycra
- ◆ Several panel and leg options
- ◆ Premium Italian Chamois
- ◆ Available in women's specific

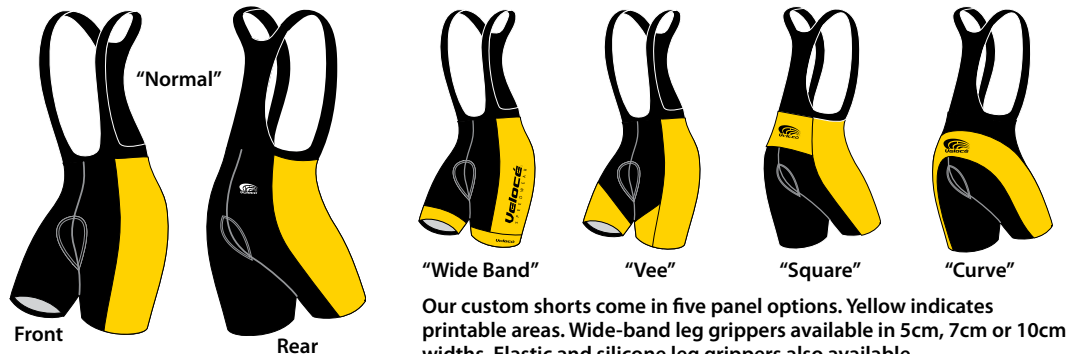


Our custom shorts come in five panel options. Yellow indicates printable areas. Wide-band leg grippers available in 5cm, 7cm or 10cm widths. Elastic and silicone leg grippers also available.

## Custom Bibs

Our bibs are all about comfort and performance.

- ◆ Nylon mesh straps for strength
- ◆ Flatlock seams
- ◆ Polyester/Lycra & Nylon/Lycra
- ◆ Several panel and leg options
- ◆ Premium Italian Chamois
- ◆ Available in women's specific



Our custom shorts come in five panel options. Yellow indicates printable areas. Wide-band leg grippers available in 5cm, 7cm or 10cm widths. Elastic and silicone leg grippers also available.

## Custom Accessories

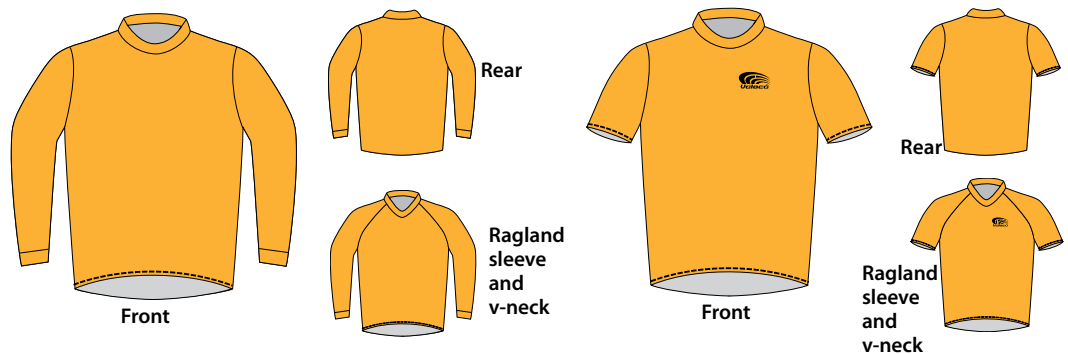
Complete your team's gear with custom accessories Yellow indicates printable area.



## Custom BMX/Downhill Jersey

Same top quality design and construction as our road jerseys.

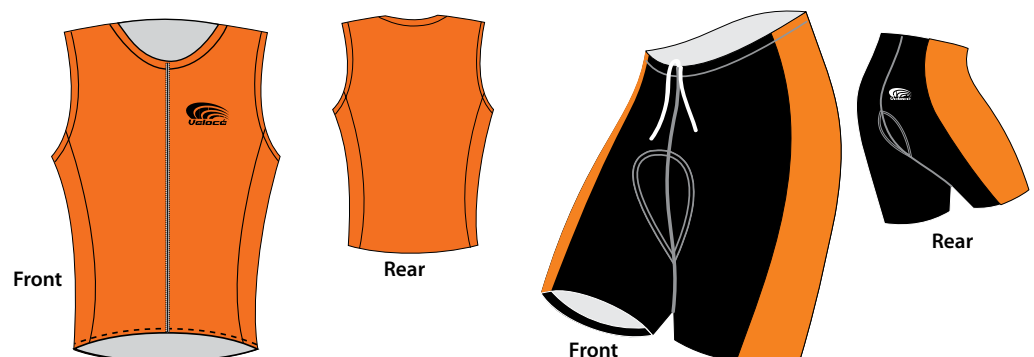
- ◆ Standard *Termic Pique* fabric, premium fabrics optional
- ◆ Sleeve and collar options
- ◆ Long or short sleeve



## Custom Triathlon Gear

Polyester/Lycra helps our triathlon jersey stay close to your body as a second skin.

- ◆ Triathlon specific chamois
- ◆ Drawstring ties to keep short in place during competition
- ◆ Available in women's specific



# Custom Skinsuits

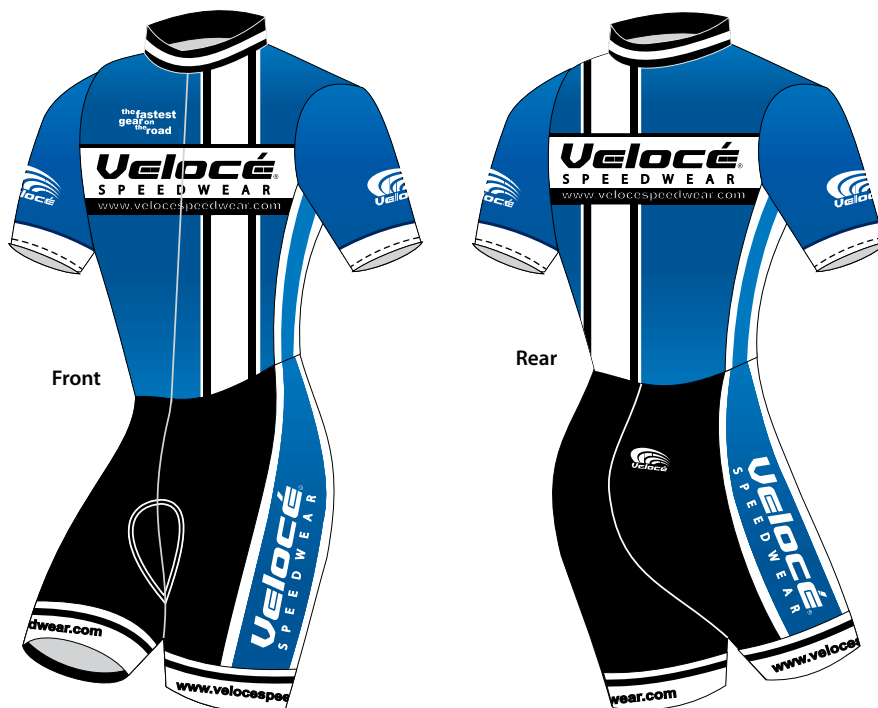


11746 SW 133 Place • Miami, FL 33186 • Toll-Free: (800) 594-3331 • P: (786) 272-2404 • F: (305) 752-4894 • [www.velocespeedwear.com](http://www.velocespeedwear.com) • [info@velocespeedwear.com](mailto:info@velocespeedwear.com)

## Skinsuits for Speedskating and Time Trials

Satisfy your need for speed with a custom skinsuit. Precision tailoring and flat stitching provide the most aerodynamic profile possible. Whether you're a speedskater or getting ready for your next cycling time trial, our skinsuits offer the best combination of comfort and performance.

- ◆ Polyester/Lycra & Nylon Lycra
- ◆ Multiple styling options
- ◆ Highest quality, dye-sublimation custom graphics



## Skinsuits are available in a variety of options:

- ◆ Classic or Pro (ragland) style sleeves
- ◆ Panels styles, from plain to the latest "wide-band" leg
- ◆ Zipper options are standard, full-length or invisible.

"Vee" Style



Wide-band Style



Curve Style



Plain Style



Square-back Style





# The Velocé Collection



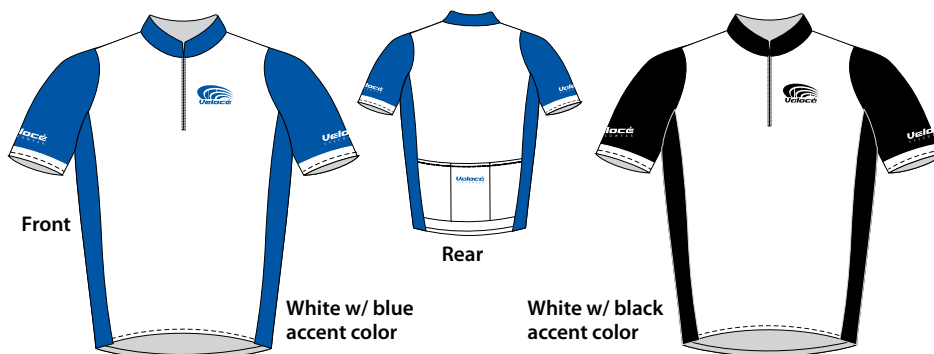
11746 SW 133 Place • Miami, FL 33186 • Toll-Free: (800) 594-3331 • P: (786) 272-2404 • F: (305) 752-4894 • [www.velocespeedwear.com](http://www.velocespeedwear.com) • [info@velocespeedwear.com](mailto:info@velocespeedwear.com)

The Velocé Collection is our exclusive line of cycling apparel. These jerseys, shorts and bibs feature high-tech fabrics, smart styling and precision tailoring. All Velocé Collection shorts and bibs use our exclusive Italian Premium Chamois.

## Clasica Jersey

Our *Clasica* jersey is a clean, classic, crisply-tailored look.

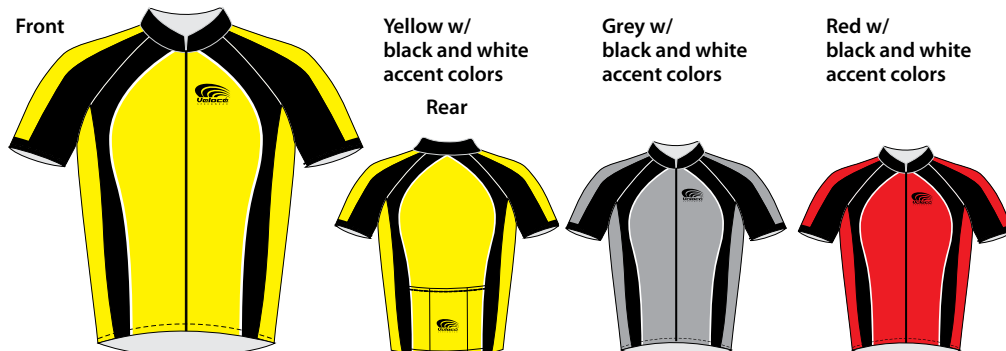
- ◆ Thermic Pique w/ side mesh side panels
- ◆ 3 Pockets w/ 4th zippered pocket
- ◆ Classic sleeve style



## Pro Jersey

Our Pro jerseys will satisfy the most serious cyclists.

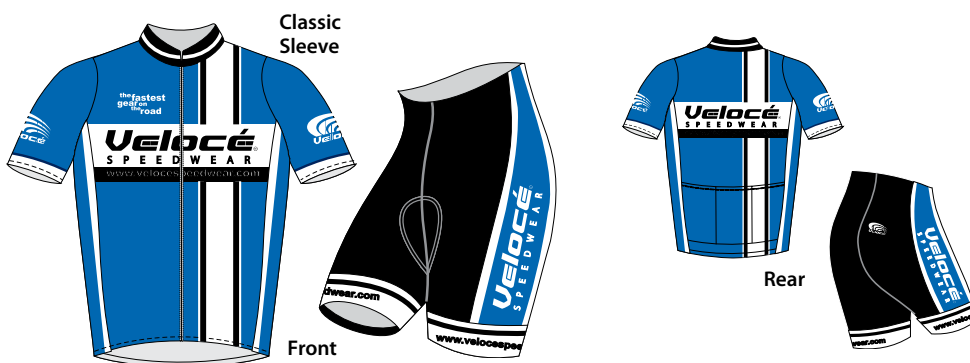
- ◆ Thermic Pique w/ side mesh side panels
- ◆ 3 pockets for storage
- ◆ Ragland sleeve style
- ◆ Full zipper



## Azul Kit

The Azul Kit is a matched set of jersey and shorts in a stylish blue, white and black design.

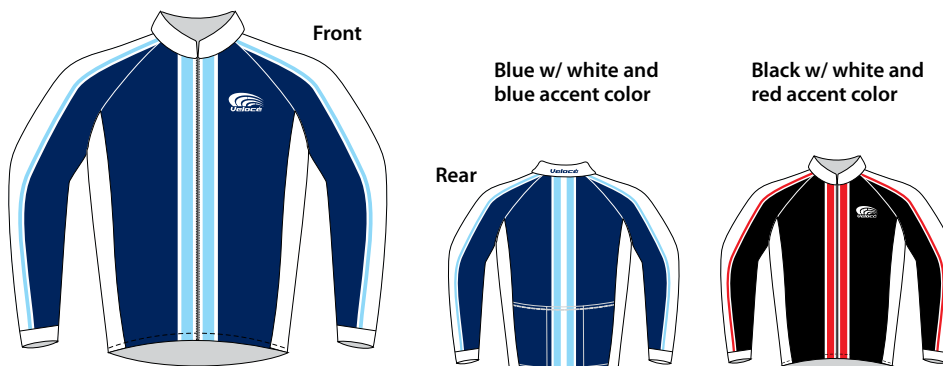
- ◆ Thermic Pique w/ side mesh side panels
- ◆ 3 Standard Pockets
- ◆ Shorts feature premium Italian chamois
- ◆ Wideband leg grippers
- ◆ Optional bib style short



## Elite Long-Sleeve Jersey

It's hard to match the unique style and performance of our long-sleeve jersey.

- ◆ Tempo Lafayette fabric
- ◆ 3 standard pockets
- ◆ Ragland sleeve style
- ◆ Full-length front zipper
- ◆ Ragland sleeve style

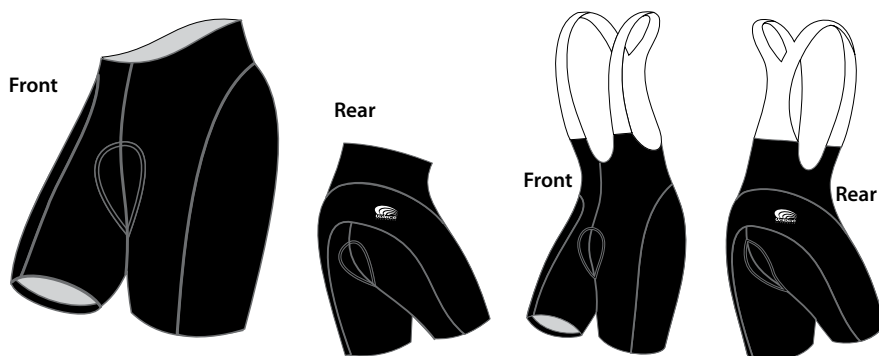


---

## Clasica Shorts & Bibs

Combine our Clasica jersey with our Clasica shorts and bibs.

- ◆ Exclusive, premium Italian chamois
- ◆ Nylon/Lycra material
- ◆ Flat stitching
- ◆ Highest quality fit and comfort
- ◆ Silicon elastic leg grippers

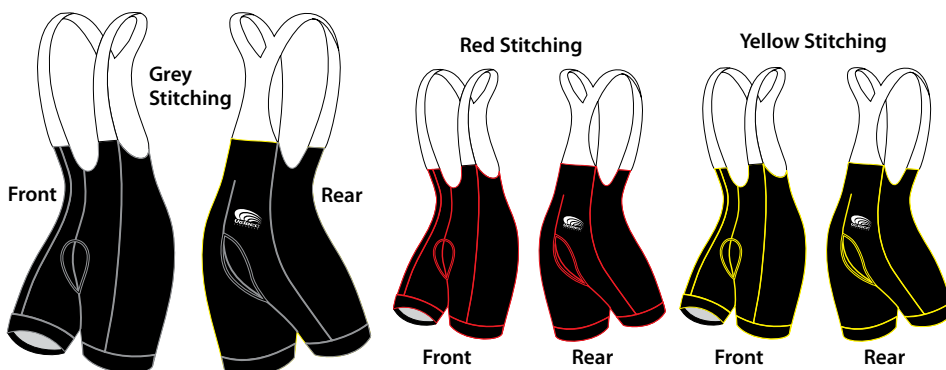


---

## Wide-Band Bib

The ultimate in comfort: combine a bib with wide-band leg grippers.

- ◆ Exclusive, premium Italian chamois
- ◆ Nylon/Lycra material
- ◆ Flat stitching in three color options
- ◆ Highest quality fit and comfort

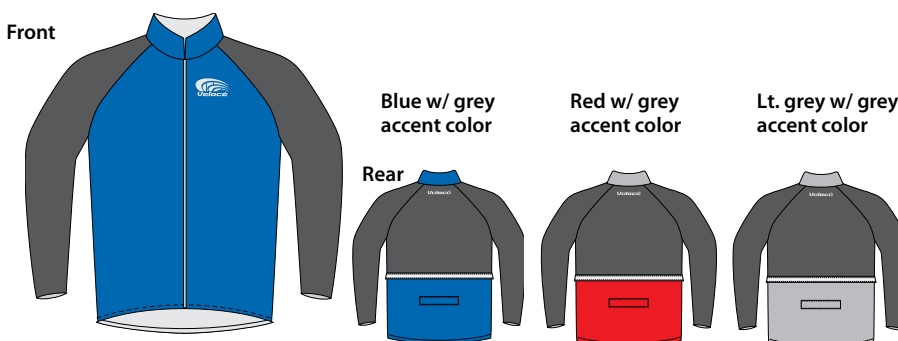


---

## Jacket

Protect yourself against the cold or wet weather with our windbreaker.

- ◆ Water repellent material
- ◆ Reflective tape and logos for visibility
- ◆ Large single, flapped pocket
- ◆ Full-length zipper
- ◆ Ragland sleeves



---

## Vest

Perfect for cooler morning rides, our vest is an easy way to cover up.

- ◆ Water repellent material
- ◆ Reflective tape and logos for visibility
- ◆ Large single, flapped pocket
- ◆ Full-length zipper



---

## Pro Gloves & Pro Socks

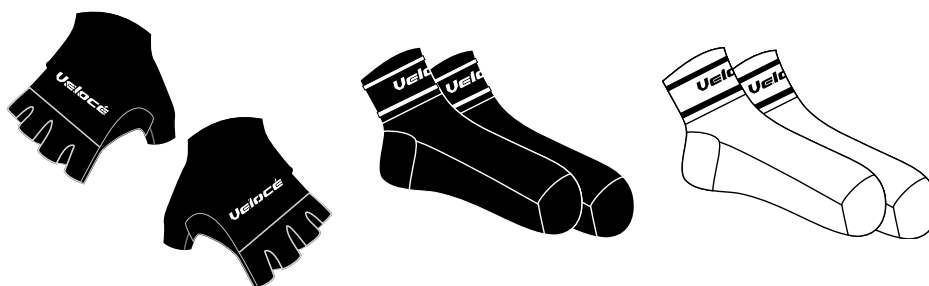
Finish your Velocé Collection outfit with our signature gloves and socks.

### Gloves:

- ◆ Mesh backing for ventilation
- ◆ Ergonomic Silicon gel padding

### Socks:

- ◆ Keep your feet comfortable during the longest ride





# Sizing Chart



Men's jerseys are available in 3 different fits (cuts); "CLUB", "RACE", and "HUSKY". The club fit is more relaxed and runs true to size. We highly recommend it for recreational riders. The race fit is designed to be worn close to the rider's body without inhibition of movement. There is no loose fabric to flap or cause friction. We recommend race fit for serious athletes and for competitive cyclists. Husky runs large and is recommended for the bigger physique.

<b>Men's Sizing Chart (in inches)</b>	<b>XS</b>	<b>S</b>	<b>M</b>	<b>L</b>	<b>XL</b>	<b>XXL</b>
Race Fit Jersey (Chest)	31-32	33-34	35-36	37-38	39-40	41-42
Club Fit Jersey (Chest)	33-34	35-36	37-38	39-40	41-42	43-44
Shorts (Waist)	28-30	28-30	31-32	33-34	35-36	38-40
<b>Men's Husky Sizing Chart</b>	<b>3XL</b>	<b>4XL</b>				
Jersey (Chest)	45-46	47-48				
Shorts (Waist)	39-40	N/A				
<b>Gloves (in inches)</b>	<b>S</b>	<b>M</b>	<b>L</b>	<b>XL</b>		
Palm Circumference	7-8	8-9	9-10	10-11		
<b>Women's Sizing Chart</b>	<b>XS</b>	<b>S</b>	<b>M</b>	<b>L</b>	<b>XL</b>	
Jersey (Chest)	31-32	33-34	35-36	36-38	39-40	
Shorts (Waist)	24	26	28	30	32	

# Product Specs

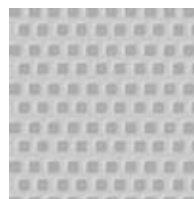


## Information about our exclusive Italian Chamois.

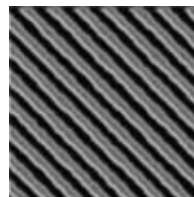
Our shorts, bibs, knickers and tights feature our exclusive Italian high-tech performance pad, developed through research and cooperation with professional cycling teams participating in the Giro d'Italia and Tour de France. The technology, materials and design of our chamois is found only in the highest professional cycling wear. We proudly offer it to you.

## Information about our jerseys, shorts and skinsuits

Our jerseys are made with SmartDry® Ultimate Moisture Control which absorbs and evaporates sweat, keeping you dry. MeshAir® is used in the jersey side panels to keep you cooler. Polyester Lycra® is used in the lateral panels of our shorts and also in our skinsuits. Flexible and durable Nylon Lycra® is used in the main panels of our shorts. Our signature leg gel grippers are made with Silicone Elastic to keep your shorts in place. Our garment designs, stitching techniques and state-of-the-art production combine to provide you with the highest quality sportswear products available.



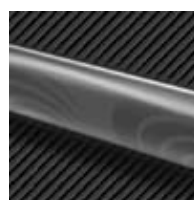
*MeshAir®*



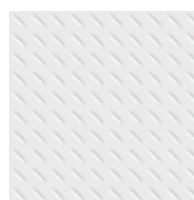
*NylonLYCRA®*



*PolyesterLYCRA®*



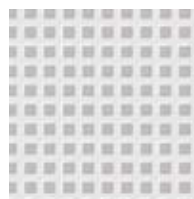
*Silicone Elastic*



*Termic-Pique*



*TEMPOLafayette*



*Tenerife*

## **Our Mission:**

Velocé Speedwear® is an international maker of sportswear for cycling, mountain biking, cyclo-cross, and speed skating. We are dedicated to providing the highest quality materials, newest technologies and innovative designs.

Our only goal is to satisfy the sportswear needs of both enthusiasts and competitors in functionality, style and personalization.



11746 SW 133 PLACE  
MIAMI, FLORIDA 33186

TOLL FREE: (800) 594-3331 • (786) 272-2404

[info@velocespeedwear.com](mailto:info@velocespeedwear.com)  
[www.velocespeedwear.com](http://www.velocespeedwear.com)